



Space Buggy Explorations

Learning values

- Exploring space vehicles
- Investigating surfaces and making decisions
- Learning about outer space travel

Recommended materials

- 9335 Space & Airport Set

Vocabulary

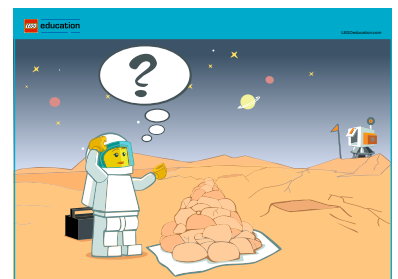
Encourage the use of these words during the activity:

- Astronaut
- Outer space
- Space buggy
- Surface
- Sample
- Weightless
- Movement
- Communication
- Shuttle

Connect

Allan and Sheila are famous astronauts and they have been sent on an expedition into outer space. They have just landed on a planet and the first thing they have to do is to collect different samples of the planet surface.

Sheila is the first to go and she finds that she can only walk very slowly due to her weightless condition. She needs some sort of transportation device that will allow her to cross the bumpy surfaces to collect samples. Can you help her?



Use the illustration to support the Connect story

Construct

- Design and make a space buggy that can carry one astronaut and travel on all sorts of surfaces: rough, smooth, bumpy, and fragile.



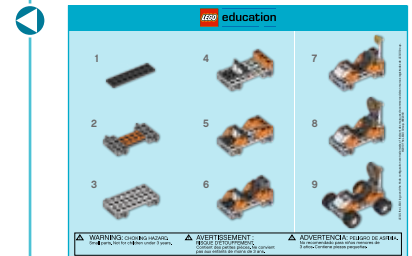
Suggested model solution

Contemplate

- Have the children demonstrate how well their space buggy is functioning. Possibly test on assorted bumpy surfaces.
- Discuss with the children why astronauts wear special clothes and what it is like to be weightless? Try to move around like a weightless person and show the difference to normal movement patterns.
- Encourage the children to explain how their buggy communicates with the shuttle while being on the surface of another planet.

Continue

- The surface samples that have been collected need to be brought back to the shuttle for further examination. Design and make some sort of container for the samples to make it easier for Sheila to get them back safely.
- Back at the shuttle, it might not be easy to get the samples safely into the shuttle. Think of a way to solve this problem. Design and make a solution.



Can be used as inspiration



